



REGIONAL SPECIALISED METEOROLOGICAL CENTRE-TROPICAL CYCLONES, NEW DELHI SPECIAL TROPICAL WEATHER OUTLOOK

DEMS-RSMC TROPICAL CYCLONES NEW DELHI DATED 08.09.2024

SPECIAL TROPICAL WEATHER OUTLOOK FOR NORTH INDIAN OCEAN (THE BAY OF BENGAL AND THE ARABIAN SEA) VALID FOR NEXT 168 HOURS ISSUED AT 0400 UTC OF 08.09.2024 BASED ON 0000 UTC OF 08.09.2024.

DEPRESSION OVER WESTCENTRAL AND ADJOINING NORTHWEST BAY OF BENGAL:

SUB: DEPRESSION FORMED OVER WESTCENTRAL AND ADJOINING NORTHWEST BAY OF BENGAL

YESTERDAY'S WELL-MARKED LOW PRESSURE AREA OVER NORTHWEST & CENTRAL BAY OF BENGAL CONCENTRATED INTO A DEPRESSION AND LAY CENTERED AT 0000 UTC OF TODAY, THE 8TH SEPTEMBER, 2024 OVER WESTCENTRAL AND ADJOINING NORTHWEST BAY OF BENGAL NEAR LATITUDE 18.0°N AND LONGITUDE 87.0°E, ABOUT 310 KM EAST OF KALINGAPATNAM (ANDHRA PRADESH, 43105), 260 KM EAST-SOUTHEAST OF GOPALPUR(ODISHA, 43049), 290 KM SOUTH-SOUTHEAST OF PARADIP (ODISHA, 42976) AND 410 KM SOUTH OF DIGHA (WEST BENGAL, 42901).

IT IS VERY LIKELY TO MOVE NEARLY NORTHWESTWARDS TOWARDS NORTH ODISHA-WEST BENGAL COASTS AND INTENSIFY INTO A DEEP DEPRESSION DURING NEXT 24 HOURS. THEREAFTER, IT IS VERY LIKELY TO MOVE WEST-NORTHWESTWARDS ACROSS NORTH-ODISHA-GANGETIC WEST BENGAL, JHARKHAND AND ADJOINING NORTH CHHATTISGARH DURING SUBSEQUENT 2 DAYS.

BAY OF BENGAL:

AT 0000 UTC, INSAT SATELLITE IMAGERY DETECTS ASSOCIATED SCATTERED TO BROKEN LOW/MEDIUM CLOUDS WITH EMBEDDED INTENSE TO VERY INTENSE CONVECTION OVER NORTHWEST & CENTRAL BAY OF BENGAL, COASTAL ODISHA, NORTH COASTAL ANDHRA PRADESH (MINIMUM CTT MINUS 85-93 DEG CEL).

ASSOCIATED MAXIMUM SUSTAINED WIND SPEED IS 25 KTS GUSTING TO 35 KTS. ESTIMATED CENTRAL PRESSURE IS 998 HPA. AT 0000 UTC, KALINGPATNAM REPORTED MEAN SEA LEVEL PRESSURE 999.5 HPA AND PURI 999.6 HPA.

WIND WARNING

SQUALLY WIND SPEED OF 45-55 KMPH GUSTING TO 65 KMPH IS CURRENTLY PREVAILING OVER NORTHWEST AND ADJOINING NORTHEAST & CENTRAL BAY OF BENGAL AND 40-50 KMPH GUSTING TO 60 KMPH ALONG & OFF NORTH ANDHRA PRADESH-ODISHA-WEST BENGAL COASTS. IT IS LIKELY TO INCREASE BECOMING 50-60 KMPH GUSTING TO 70 KMPH OVER THE SAME REGION FROM 1800

Cloud distribution: (a) Isolated: <25%, Scattered:25-50%, Broken: 51-75%, Solid:>75%, Convection Intensity: (a) Weak: Cloud Top Temperature (CTT) >-25°C, (b) Moderate: CTT: - 25°C to -40°C, (c) Intense: CTT: - 41°C to -70°C and (d) Very Intense: : Less than -70°C
PROBABILITY OF CYCLOGENESIS (FORMATION OF DEPRESSION):NIL: 0%, LOW: 1-33%, , MODERATE: 34-66% AND HIGH: 67-100%
This is a guidance Bulletin for WMO/ESCAP Panel Member countries. Visit respective National websites for Country specific Bulletins

UTC OF TODAY, THE 8TH SEPTEMBER TILL 0000 UTC OF 10TH SEPTEMBER AND DECREASE GRADUALLY THEREAFTER.

SEA CONDITION: ROUGH TO VERY ROUGH SEA CONDITION OVER NORTHWEST AND ADJOINING NORTHEAST & CENTRAL BAY OF BENGAL AND ALONG & OFF NORTH ANDHRA PRADESH-ODISHA-WEST BENGAL COASTS FROM TODAY, THE 8TH SEPTEMBER TILL 0000 UTC OF 10TH AND ROUGH SEA CONDITION ON 11TH SEPTEMBER.

FISHERMEN WARNING

FISHERMEN ARE ADVISED NOT TO VENTURE INTO NORTHWEST AND ADJOINING NORTHEAST & CENTRAL BAY OF BENGAL; ALONG & OFF NORTH ANDHRA PRADESH-ODISHA-WEST BENGAL COASTS TILL 0600 UTC OF 11TH SEPTEMBER.

REMARKS:

THE LOW LEVEL CONVERGENCE IS AROUND $20-30 \times 10^{-5} \text{ S}^{-1}$ TO THE SOUTHWEST OF SYSTEM CENTRE. UPPER LEVEL DIVERGENCE IS AROUND $10-20 \times 10^{-5} \text{ S}^{-1}$ TO THE SOUTH WEST OF SYSTEM CENTRE. THE WIND SHEAR IS MODERATE TO THE SOUTHWEST OF THE SYSTEM CENTRE AND LOW ALONG THE FORECAST TRACK. VORTICITY AT 850 HPA LEVEL IS AROUND $150 \times 10^{-5} \text{ S}^{-1}$ NEAR THE SYSTEM AREA.

MOST OF THE NUMERICAL WEATHER PREDICTION MODELS (IMD GFS, NCEP GFS, GEFS, ECMWF, AND NCUM) ARE SHOWING INITIAL NORTHWARDS MOVEMENT TILL 0000 UTC 09TH SEPTEMBER AND THEN NORTHWESTWARDS TOWARDS NORTH ODISHA COAST TILL 12/18 UTC OF 09TH SEPTEMBER.

IT IS CONCLUDED THAT THE SYSTEM IS VERY LIKELY TO MOVE NEARLY NORTHWESTWARDS TOWARDS NORTH ODISHA-WEST BENGAL COASTS AND INTENSIFY INTO A DEEP DEPRESSION DURING NEXT 24 HOURS. THEREAFTER, IT IS VERY LIKELY TO MOVE WEST-NORTHWESTWARDS ACROSS NORTH-ODISHA-GANGETIC WEST BENGAL, JHARKHAND AND ADJOINING NORTH CHHATTISGARH DURING SUBSEQUENT 2 DAYS.

ARABIAN SEA:

RECENT INSAT SATELLITE IMAGERY DETECTS SCATTERED LOW/MEDIUM CLOUDS WITH EMBEDDED MODERATE TO INTENSE CONVECTION OVER SOUTHEAST & EASTCENTRAL ARABIAN SEA, LAKSHDWEAP AREA AND WEAK TO MODERATE CONVECTION OVER WESTCENTRAL & SOUTHWEST ARABIAN SEA, MALDIVES AREA AND COMORIN AREA.

***PROBABILITY OF CYCLOGENESIS (FORMATION OF DEPRESSION) DURING NEXT 168 HRS:**

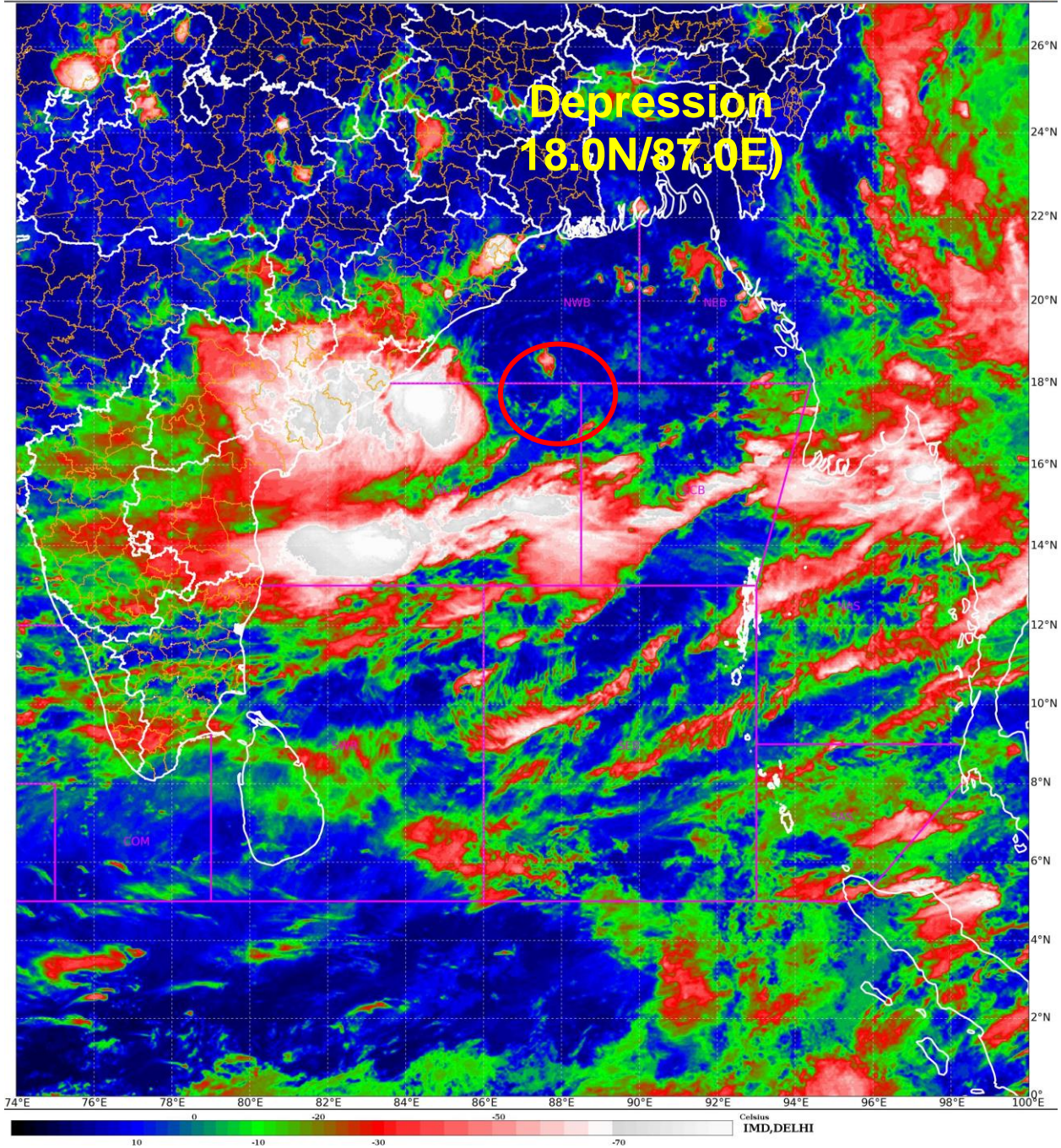
24 HOURS	24-48 HOURS	48-72 HOURS	72-96 HOURS	96-120 HOURS	120-144 HOURS	144-168 HOURS
NIL	NIL	NIL	NIL	NIL	NIL	NIL

***NOTE: EVERY 24HR FORECAST IS VALID UPTO 0300 UTC (0830 IST) OF NEXT DAY**

(DR. SHASHI KANT)
RSMC NEW DELHI

SAT : INSAT-3DR IMG
IMG_TIR1_TEMP 10.8 um
L1C Mercator

08-09-2024/(0245 to 0312) GMT
08-09-2024/(0815 to 0842) IST



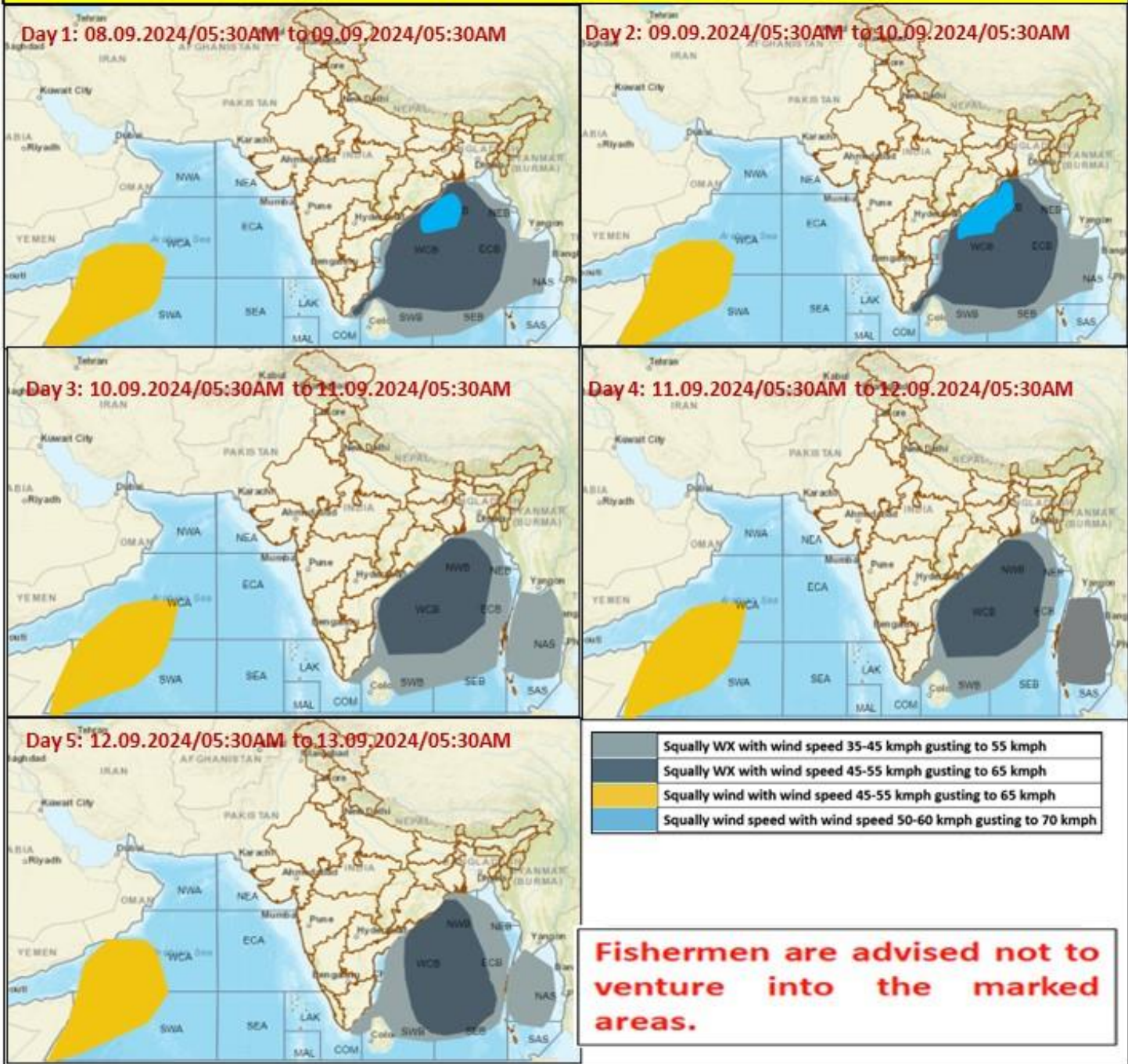
Cloud distribution: (a) Isolated: <25%, Scattered:25-50%, Broken: 51-75%, Solid:>75%, Convection Intensity: (a) Weak: Cloud Top Temperature (CTT) >-25°C, (b) Moderate: CTT: - 25°C to -40°C, (c) Intense: CTT: - 41°C to -70°C and (d) Very Intense: : Less than -70°C
PROBABILITY OF CYCLOGENESIS (FORMATION OF DEPRESSION):NIL: 0%, LOW: 1-33%, , MODERATE: 34-66% AND HIGH: 67-100%
This is a guidance Bulletin for WMO/ESCAP Panel Member countries. Visit respective National websites for Country specific Bulletins

DEPRESSION OVER WESTCENTRAL AND ADJOINING NORTHWEST BAY OF BENGAL BASED ON 0530 HRS IST of 8th SEPTEMBER, 2024



Cloud distribution: (a) Isolated: <25%, Scattered:25-50%, Broken: 51-75%, Solid:>75%, Convection Intensity: (a) Weak: Cloud Top Temperature (CTT) >-25°C, (b) Moderate: CTT: - 25°C to -40°C, (c) Intense: CTT: - 41°C to -70°C and (d) Very Intense: : Less than -70°C
 PROBABILITY OF CYCLOGENESIS (FORMATION OF DEPRESSION):NIL: 0%, LOW: 1-33%, , MODERATE: 34-66% AND HIGH: 67-100%
 This is a guidance Bulletin for WMO/ESCAP Panel Member countries. Visit respective National websites for Country specific Bulletins

Fishermen warning graphics



Cloud distribution: (a) Isolated: <25%, Scattered:25-50%, Broken: 51-75%, Solid:>75%, Convection Intensity: (a) Weak: Cloud Top Temperature (CTT) >-25°C, (b) Moderate: CTT: - 25°C to -40°C, (c) Intense: CTT: - 41°C to -70°C and (d) Very Intense: : Less than -70°C
 PROBABILITY OF CYCLOGENESIS (FORMATION OF DEPRESSION):NIL: 0%, LOW: 1-33%, , MODERATE: 34-66% AND HIGH: 67-100%
 This is a guidance Bulletin for WMO/ESCAP Panel Member countries. Visit respective National websites for Country specific Bulletins